

RETAIL INSIGHTS OMNI CHANNEL TECHNOLOGY PARTNER

RETAIL IS OUR PASSION



RETAIL INSIGHTS OMNI CHANNEL TECHNOLOGY PARTNER



10 of the Top 20 India retailers, and **100+** Omni Channel Project Executed



100% revenue is from Retail and Brands
3 Locations - Dubai, India and USA



95+ technically qualified – Retail Domain Practice

Omni Channel partner

Partnerships with Adobe, Salesforce and other niche players in the Industry



Retail Association of India






















Production Support for over **100,000** Online Orders

WE ARE THE MOST **TRUSTED** PARTNERS FOR MANY RETAILERS IN THEIR OMNI CHANNEL JOURNEY



WITH SOLUTION BASKET FOR UNIFIED FOR DIGITAL RETAILING.



 Omni channel Retailing	 Integrated Solutions	 KPI and Dashboards	 Cloud Native App Dev	 Enterprise Mobility
 Returns Management	 POS	 Demand Planning	 Merchandising Optimization	 Price and Promotions
 Marketing Automation Personalizing	 Digital Wallets	 Loyalty Management	 Warehouse Automations	 Last Mile Deliveries Transportation
 Consulting	 Development	 Maintenance	 Testing	 Digital Services

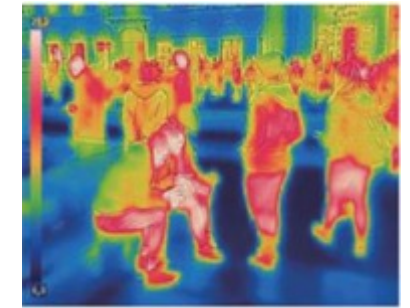
- I. Contactless body temperature detection for Store and DC workers
- II. In Store Customer/Foot Traffic Situation and Behavior Analysis
- III. Contactless Automated Prescription Medicine Dispensing
- IV. Contactless curb-side pickup for Supermarket and QSR
- V. Contactless Checkout



Q-Fresh
Curb-side pickup



Zero-Q
Frictionless Store



Contactless temp.
measurement



Pharmacy
dispenser



Store footfall
Counting

SOLUTION I OVERVIEW - NON-CONTACT TEMPERATURE MEASUREMENT

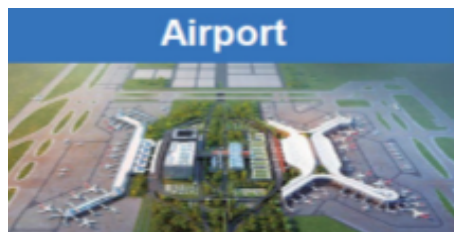
WHY WE NEED IT

To prevent further spread of COVID19, measures like social distancing and body temperature measurement are implemented in all venues like shopping centers, airports, government and private office buildings, child care centers, malls and educational institutions etc.

These places rely on **manual checks** to identify individuals. This is **Ideal for warehouse –distribution center and back store to ensure employee safety and compliance**

WHAT DOES THIS DO

Thermal camera detection can detect human body temperature within the range of 4 meters and reduce the need to come within 6 ft (maintains social distancing). The system can detect human body temperature quickly and detect / alert fever at high speed & accuracy with integrated thermal images.



Airport



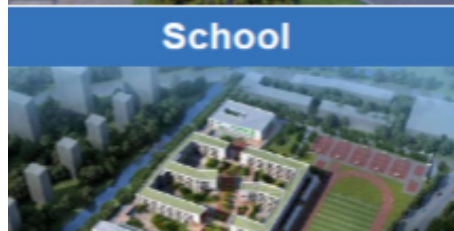
Train Station



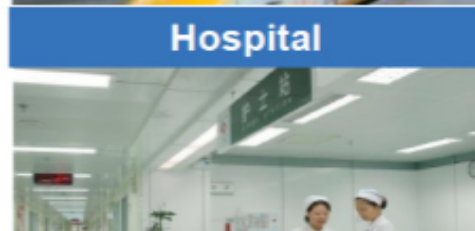
Bus Station



MRT Station



School



Hospital



Residential Compound



Enterprise Building

SOLUTION I OVERVIEW - NON-CONTACT TEMPERATURE MEASUREMENT

WHAT DOES THIS DO

- Thermal camera with high temperature accuracy can detect the elevated body temperature to make the preliminary screening.
- Thermal camera converts IR radiations from our bodies into gray value, and establishes the accurate corresponding relation between gray value and temperature through the temperature measurement algorithm model.
- Body Temperature Measurement Thermal Camera can be integrated with internal systems to alert internal groups

KEY FEATURES

- Non-contact Temperature Measurement – Supports non-contact measurement up to distances of ~4 mtrs (12 ft).
- Optimized detection model that identifies the forehead to measure the temperature of people even if they are wearing masks or hats.
- Forehead detection rate is > 99.9% accurate in the range of 30°C - 45°C, with accuracy as high as $\pm 0.3^{\circ}\text{C}$, in indoor conditions.
- Ability to accurately measure the temperature of multiple people simultaneously.
- Recommended thermal camera detection distance is ~4 meters (12 ft) and covers one wide door/entrance area.
- Takes less than a second to detect temperature of each person. Thus, no congestion when passing through the site where temperature check is placed.

SOLUTION 2 OVERVIEW - CURB SIDE PICK UP-CONTACTLESS GROCERY AND FOOD DELIVERY

Product Description



- Automated self-service module with two temperature modes:
 - Fresh (8 - 12°C)
 - Freeze (up to - 18°C)

Industrial Solutions

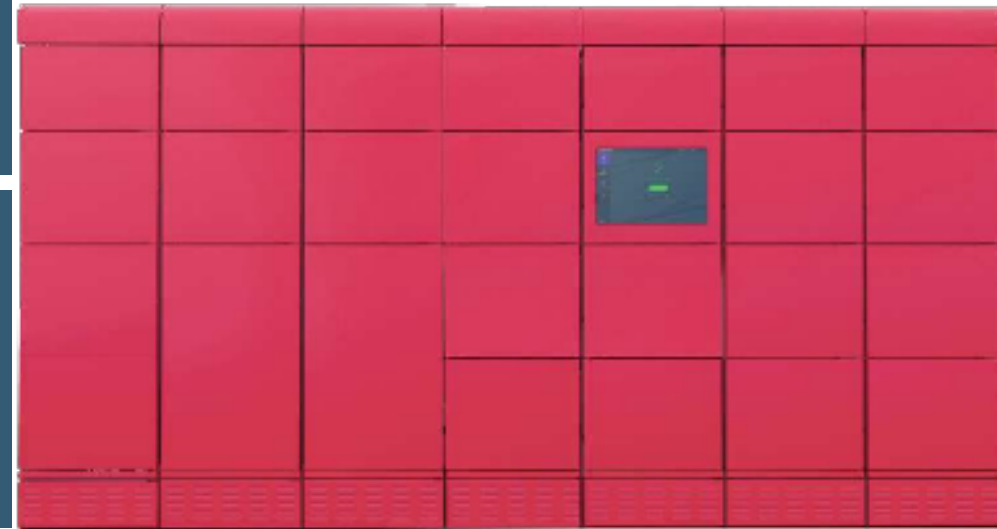


- Logistics
- Retailers
- QSR
- Office locations

Competitive Advantages

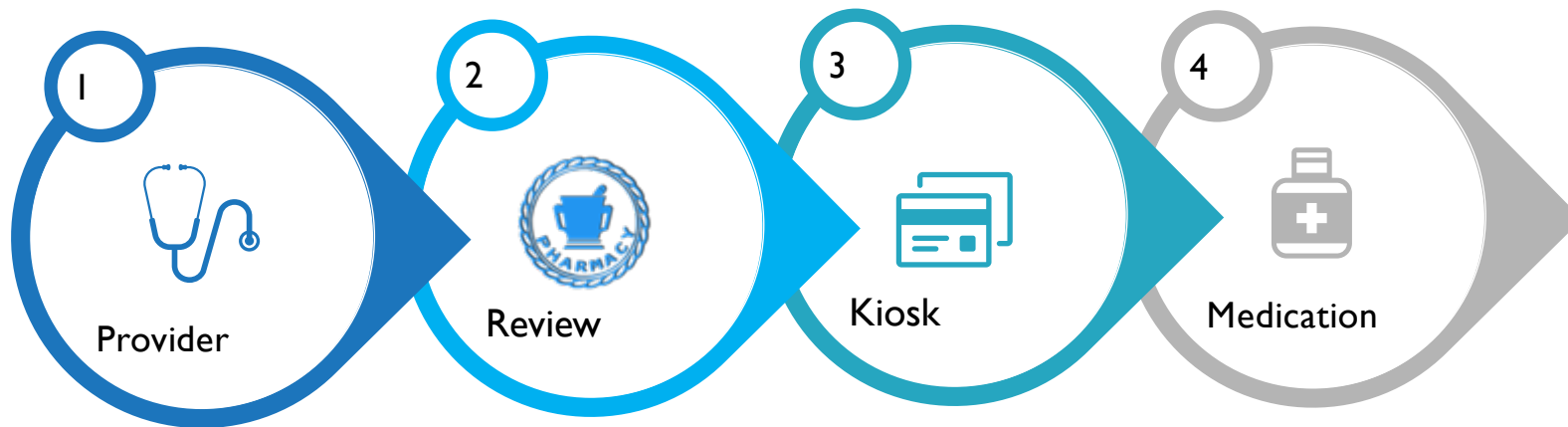


- Fast scaling
- Cost optimization
- Wider range of goods to deliver
- Perfect for placing in small sites



SOLUTION 3 OVERVIEW – CONTACTLESS PHARMACY DISPENSER

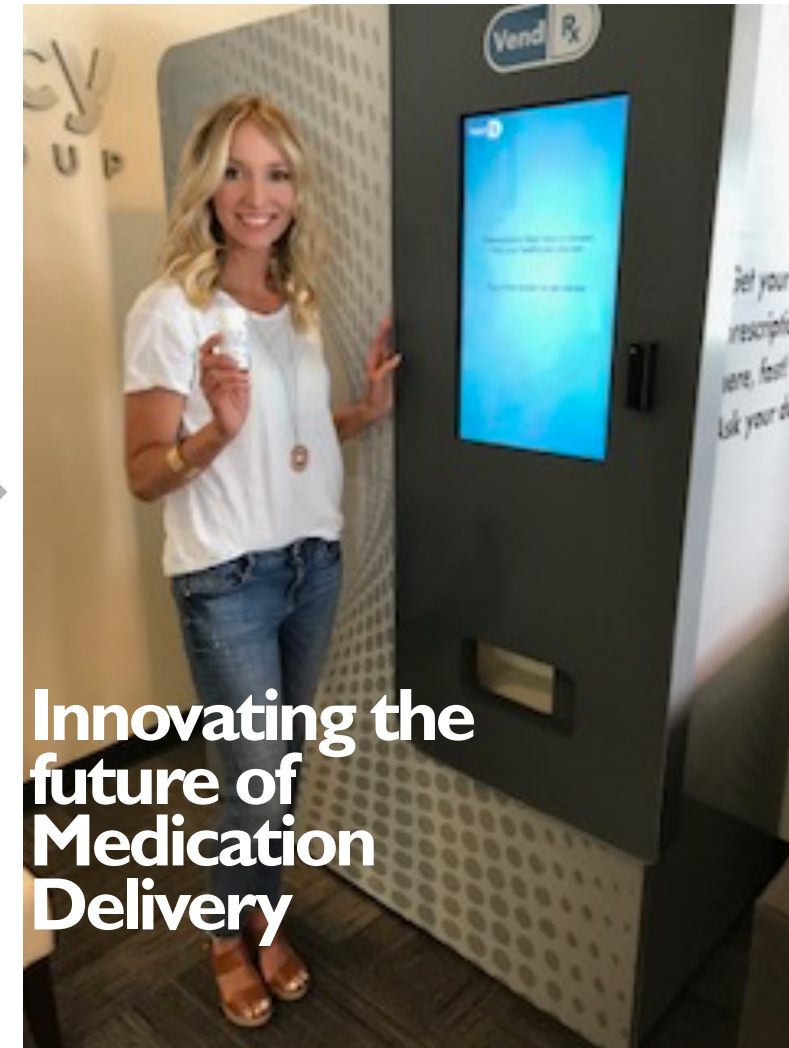
An automated prescription processing & medication dispensing service that takes about a minute.



Pharmacy integration enables transfer of Rx from the clinician to the pharmacy software for DUR, Adjudication as needed

Prescription transferred to Kiosk ready for patient

Patient access dispenser, consultation as needed, medication is dispensed with patient info and receipt



Innovating the future of Medication Delivery

SOLUTION 4 OVERVIEW – FOOTFALL COUNTING

List of Possibilities

- 1 *Enforce social distancing
- 2 *Enforce aisle restrictions
- 3 *Insights on foot-fall
- 4 *Curbside delivery flow
- 5 Potential conflict zones
- 6 Track customer journey
- 7 New sales analytics



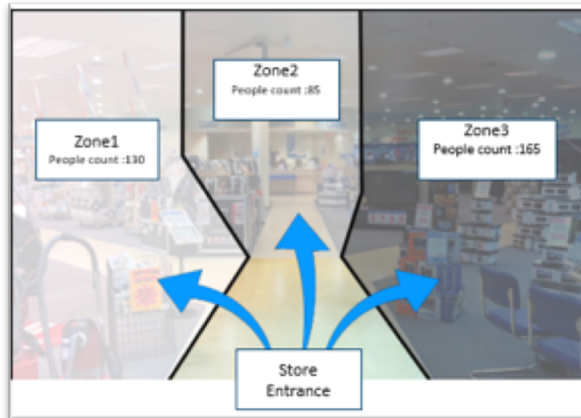
Prioritize Your Use Cases

Impact and Relevance to Covid 19 Situation	4	1 2
	●	3
	●	●
	Time to Market	

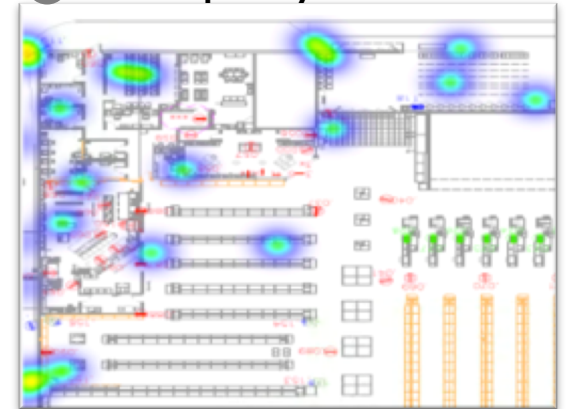


The video footage from in-store CCTV cameras are processed and analyzed using our advanced AI platform to derive insights.

a Zone-wise People Count



b Heatmap Analysis



Dashboards and insights related to shopper movements, footfall, crowded places, shopper dwell time, customer demographics.

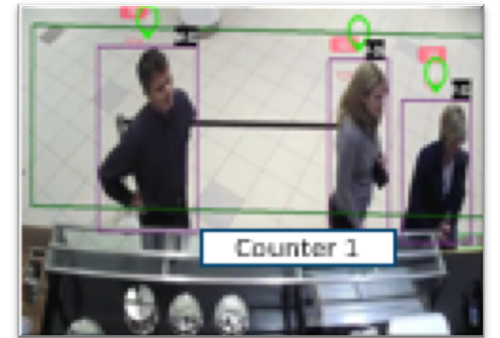
c Demographics (Age, Gender)



d Customer/Staff

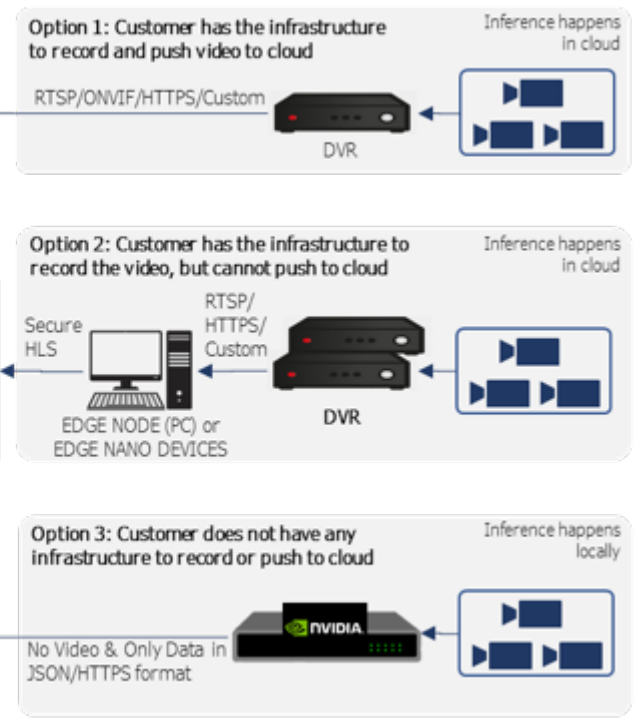
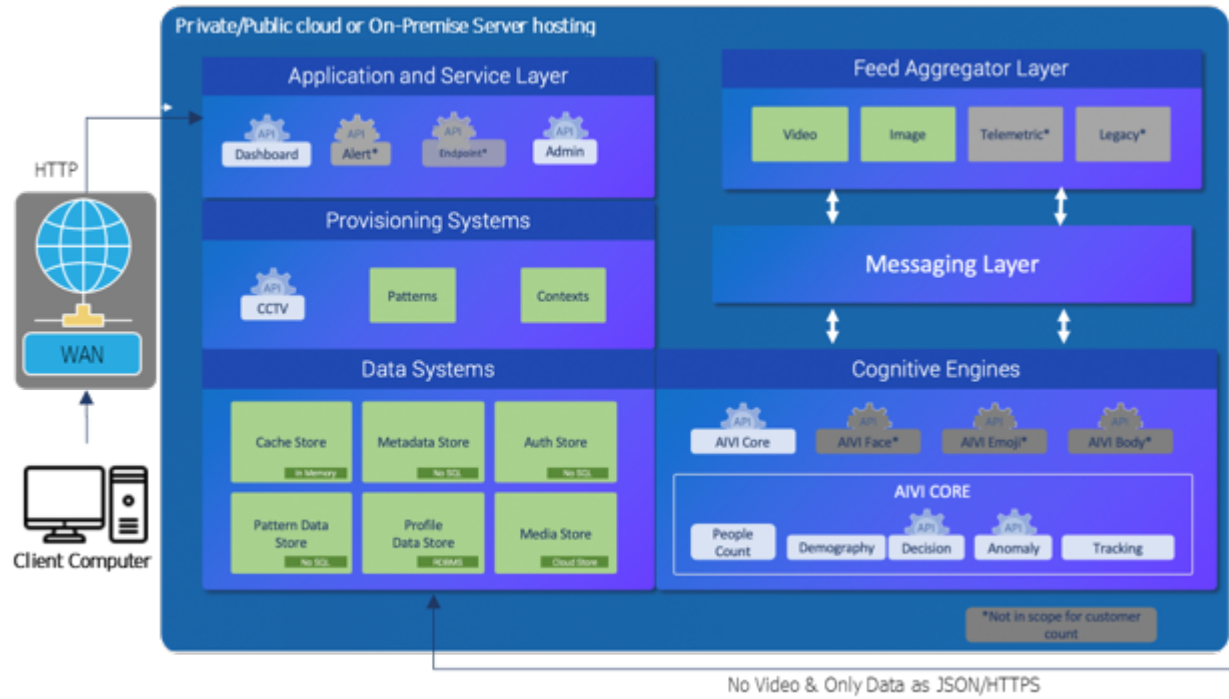


e Customer Dwell/Wait Time



Solution Options

SOLUTION COMPONENTS – FOOTFALL COUNTING



What clients get

What clients need to facilitate

- Option 1: remote access for the team, bandwidth to upload videos
- Option 2: Option 1 + edge processing capability
- Option 3: Option 2 + camera and hardware setup





Contactless store

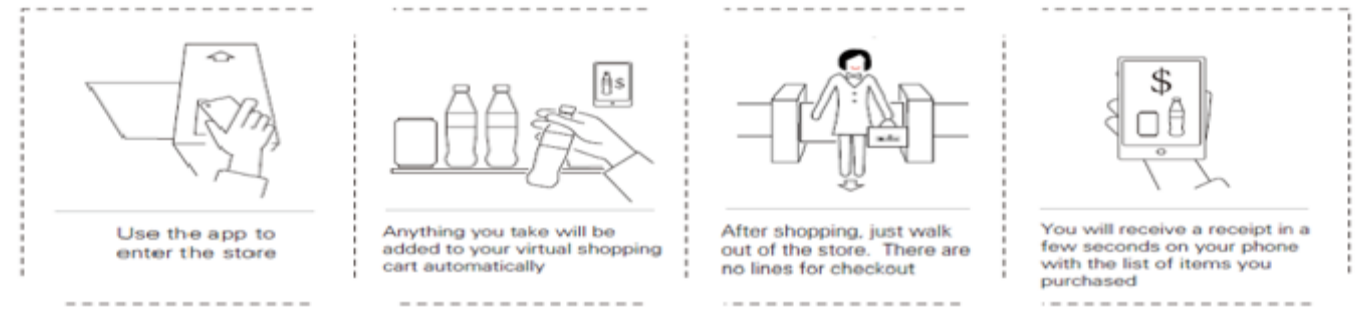
Primary Reason Shoppers Leave a Physical Store Without Making a Purchase They Intended to Make



*Note: ages 18+; numbers may not add up to 100% due to rounding
Source: Usabilla, "Retail Nightmares," June 18, 2018*

✓ In a typical Zero Q Micro Market, consumers identify themselves to enter the store, grab items from shelves, then pay digitally, allowing them to leave without physical lines or checking out.

- ✓ Checkout counter free stores solve customer pain points in a grocery stores with long checkout Qs
- ✓ Zero Q Checkout stores use cutting edge technology and reduce the need for manning traditional checkout counters. Stores can be kept open for 24 hours for urban lifestyle of millennials and Gen Z shoppers



Key Features

- ✓ Micro-vision system
- ✓ RGB Cameras
- ✓ IoT sensors
- ✓ Intel Open VINO Tool Kit
- ✓ Cable cabinets, networks, firewalls

WHY RETAIL INSIGHTS

100% Retail Tech

Technology Enablement

Personalized Attention

Proactive Communication



Thanks...lets execute

sales@theretailinsights.com

Skype – Retailinsights

<https://www.linkedin.com/in/retailinsights>

www.theretailinsights.com