



First Call Deck

September 2023

INTERNAL ONLY
CONFIDENTIAL

Contents

- Enable Consulting Overview
- Consulting Practice and Solutions
- Customer Success and Case Studies
- Next Steps

Enable Consulting Leadership Team



Joe Cellucci, CEO

[LinkedIn](#)



Ed Camarota, COO

[LinkendIn](#)



Sherry French, Chief
Architect / EVP Delivery

[LinkedIn](#)



Matt Wallock, CRO

[LinkedIn](#)

Enable Consulting Overview

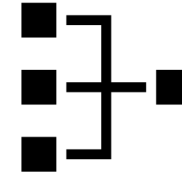
A Systems Engineering Consultancy that Specializes in CRM



**Customer
Relationship
Management**



**Digital
Transformation**



**Systems
Engineering**

salesforce



Microsoft

What We Do

Boutique consulting with proven experience in the Salesforce and Microsoft ecosystems, in addition to custom solutions

CRM

- Product Implementations
- Lead-to-Cash Processes
 - ❑ Marketing
 - ❑ Sales & Maps
 - ❑ CPQ
- Service Transformation
 - ❑ Service
 - ❑ Contact/Call Centers
 - ❑ Field Service
 - ❑ RMA
- CRM as a Platform
- eCommerce
- Analytics and AI

Consulting

- Enterprise Architecture
- Systems Analysis
- Quick Starts and Assessments
- Business Requirements
- Program/Project Management
- Project Delivery
- System Integration
- Competency Enrichment
- Change Management
- Training

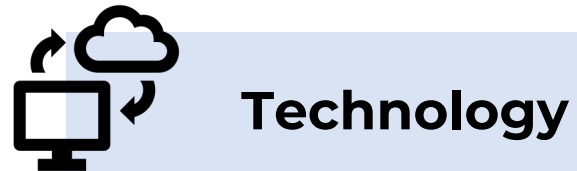
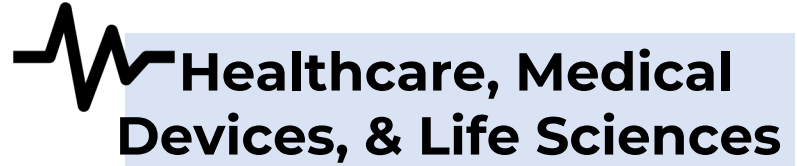
System Engineering

- Architecture and Design
- Development – Web & Mobile
- Cloud Platforms
- Platform and App Integration
- Reporting and Analytics
- Migrations and Data Conversion
- Support and Maintenance Services



salesforce

Industry Experience and Focus



Salesforce Consulting Practice

Building Cost Effective, High-Quality Solutions, Tailored to your Business

Local consulting with global reach and access as a Prolifics Company

- 20 years of experience
- 120-person team global team with a focus in North America and offshore offices in India
- 1,000+ overall projects
- 200+ Salesforce implementations
- 50+ certifications
- Experts in complex system integration

No project too small or too large for our team

Expert focus on complex solutions and integration

- Lead-to-Cash
- CPQ
- Field Service
- RMA

Strong industry experience

- Healthcare & Life Sciences
- Manufacturing
- Non-profit
- Energy & Utilities
- Financial Services

People and Locations

Solutions Delivered by Hybrid Teams

Local Consulting. Global Delivery.

- Projects led by US-based, client facing onshore team
- Our offshore team's experience and capacity allows us to meet project demands
- High-quality solutions resulting from leadership and experience
- Flexible delivery model – Agile, Hybrid Agile, and Waterfall



California
Colorado
Florida
Illinois
Massachusetts
New Jersey
New York
North Carolina
Pennsylvania
Texas
Washington, D.C.



Bengaluru
Hyderabad
Kochi

The Results

- Local engagement with global delivery
- Offshore delivery with a cost efficient, time sensitive approach
- Unwavering attention to quality

Salesforce Clouds



- Customer 360
- Sales Cloud
- Service Cloud
- Field Service
- Platform
- Experience Cloud (Communities)
- CPQ
- Billing
- Maps
- IoT

Salesforce Core Platform

- Data Cloud
- Pardot
- Journey Builder
- Email Studio
- Personalization
- Loyalty

Marketing Cloud

Collaboration, Integration, & Analytics

- Slack
- Analytics Cloud
- Tableau
- MuleSoft

Salesforce Industries (SFI)

- Energy & Utilities
- Manufacturing
- Nonprofit Success Pack (NPSP)
- Industry CPQ
- Consumer Goods
- Communications

Solutions and Service Offerings

Solution and Value-Based Selling



Workshops & Quick Starts

- Assessments
- Quick Start(s)
- Discovery Workshops
- Roadmaps & Blueprints



Business Process & Reusable Use Cases

- Marketing Cloud
- Experience Cloud
- Distributor Portal
- RMA
- Warranty Management



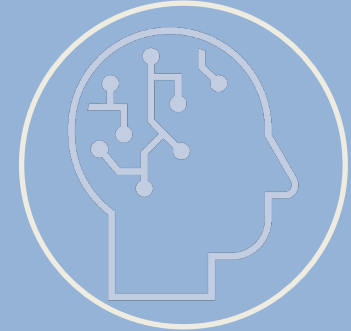
Industry Clouds & Product Focus

- Energy & Utility Cloud
- Manufacturing Cloud
- Non-profit Cloud
- CPQ
- Pardot
- Field Service
- Slack/Collaboration



Platforming Applications, Implementations & Integration

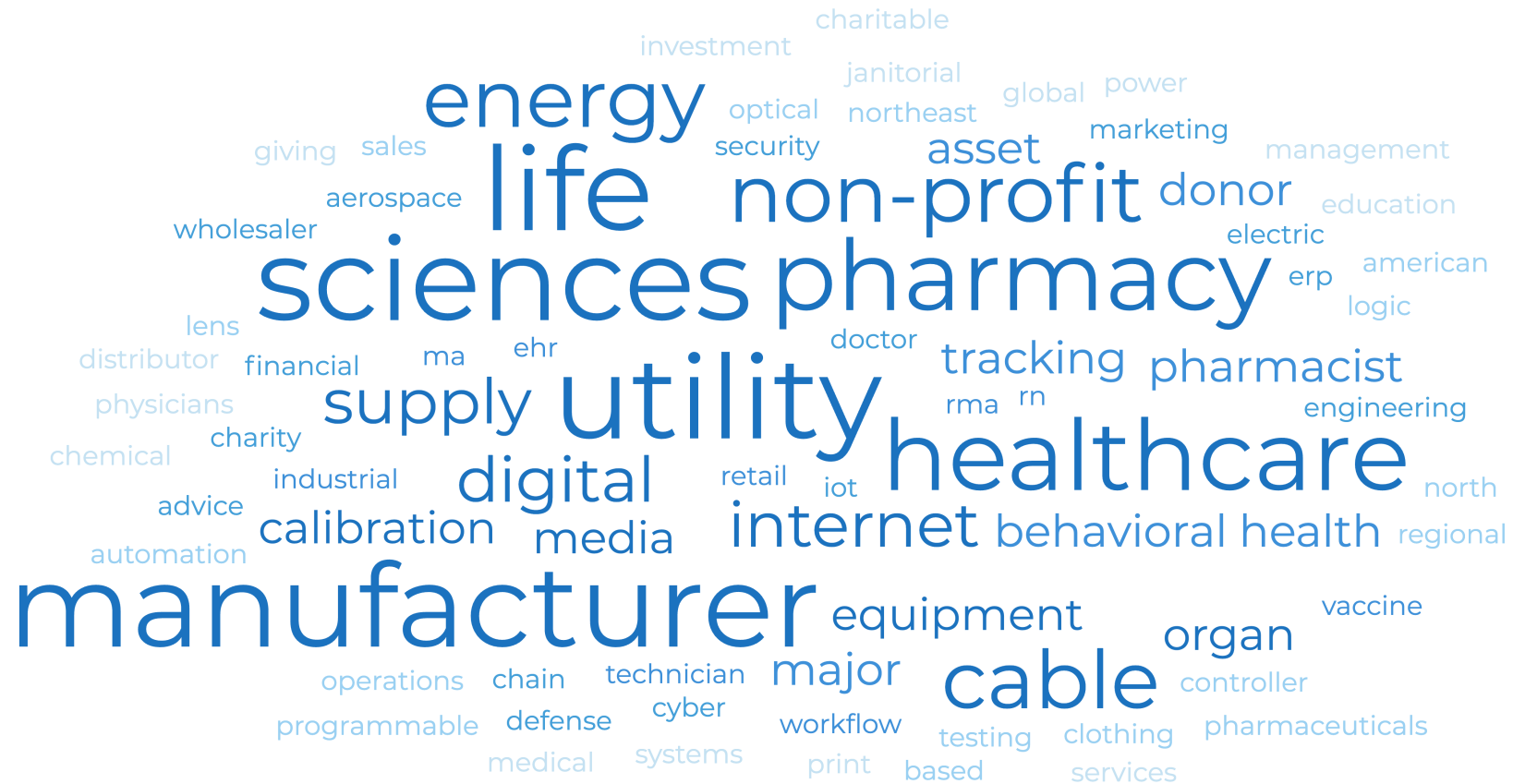
- Lightning Application Dev
- Heroku & AWS
- MuleSoft
- DevOps, CI/CD & Test Automation



AI and Analytics

- Salesforce Data Cloud
- IoT
- Einstein Intelligence
- Tableau

End-to-End Digital Business Transformation Solutions



A word cloud visualization centered on the theme of healthcare and pharmaceuticals. The words are arranged in a circular pattern, with larger fonts indicating higher frequency or importance. The most prominent words include 'healthcare', 'pharmacy', 'life sciences', 'utility', 'supplier', 'manufacturer', and 'cable'. Other notable words include 'donor', 'non-profit', 'pharmacist', 'digital', 'internet', 'behavioral health', 'equipment', 'organ', and 'vaccine'. Smaller words like 'chemical', 'calibration', 'media', 'retail', 'iot', 'testing', 'clothing', 'pharmaceuticals', 'services', 'print', 'based', 'cyber', 'defense', 'medical', 'systems', 'workflow', 'print', 'based', 'testing', 'clothing', 'pharmaceuticals', 'services', 'print', 'based', 'testing', 'clothing', 'pharmaceuticals', 'services' are also present.

energy
investment
charitable
janitorial
global
power
marketing
management
education
electric
american
logic
erp
pharmacist
engineer
north
regional
vaccine
organ
controller
pharmaceuticals
services
clothing
testing
based
print
medical
systems
cyber
defense
programmable
major
equipment
organ
cable
internet
behavioral health
digital
media
calibration
advice
automation
chemical
charity
industrial
retail
iot
north
regional
pharmacologist
engineering
rma
rn
tracking
doctor
ehr
ma
financial
distributor
lens
physicians
charity
wholesaler
aerospace
giving
sales
optical
security
asset
donor
education
electric
american
logic
erp
pharmacist
engineer
north
regional
vaccine
organ
controller
pharmaceuticals
services
clothing
testing
based
print
medical
systems
cyber
defense
programmable

The Enable Consulting Advantage

