

People Process Technology



CORPTEC
TECHNOLOGY PARTNERS

Technology Inspired | Solution Driven | Exceptional People



Who we are

Corptec collaborates with businesses to use technology to manage and transform their operations. Our mission is to unlock human potential via technology for an inclusive and sustainable future, serves as its compass each day.

We focus to deliver the best end-to-end information technology solutions with a diverse workforce constituting multi-domain IT expertise, a dominant presence in locations throughout Australia and New Zealand, and a worldwide presence in India, Turkey, and the US.



6

Technology Partnerships

50

Happy Customers

80

Technology Consultants

4

Global Locations



DON'T JUST KEEP UP, LEAD THE WAY WITH CORPTEC- YOUR TRUSTED PARTNER FOR INNOVATION



Corptec As a trusted Salesforce consulting partner, we bring our wealth of expertise to help organizations maximize the potential of this world-leading CRM platform. We are dedicated to empowering businesses by offering a wide range of innovative tools and services.



Implementation

- Full Cycle Implementation
 - Sales Cloud
 - Service Cloud
 - Marketing Cloud
- Salesforce migration from Legacy Systems
- Custom implementation of Sales and Service Cloud
- sPos & mPos implementation



Support

- Application Support
- Configuration and Admin Services
- Customizations and Development
- Dedicated & Shared Service
- Hybrid – Onsite /Off-shore



Development Services

- Custom Development on Force.com platform for Salesforce
- Expertise in Classic & Lightning development.
- Salesforce1 & Mobile App Development
- CI & CD development practice



Integration

- Salesforce/Force.com Integration with ERP Systems(SAP, Sage, QAD,MSD)
- Salesforce/Force.com Integration with Social media
- Salesforce/Force.com Integration with e-Commerce website
- Dell Boomi/E-conomic
- Salesforce Integration with AWS for AI enabled chat bot.
- CTI Integration



Features & Tools

- Salesforce Einstein
- Salesforce Shield
- Conga Composer
- Zapier
- Skyvia
- Apptus CPQ/CLM
- Pardot
- Service Now
- Remedy Force
- Flexor CTI
- Contactworld/NVM



UNLEASHING INNOVATION WITH THE POWER OF SALESFORCE AND LIGHTNING APPS

- Salesforce Implementation and Customization
- Salesforce Integration with MuleSoft
- MuleSoft Integration and API Development
- Data Migration and Integration
- Salesforce Lightning Development
- Salesforce Training and Support



READY TO TAKE YOUR SALESFORCE ECOSYSTEM TO THE NEXT LEVEL WITH OUR EXPERTS

As a Salesforce and MuleSoft partner, we offer a comprehensive range of services to help businesses leverage the power of these platforms. Our services include Salesforce implementation and customization, seamless integration between Salesforce and MuleSoft, API development, data migration and integration, API-led connectivity, MuleSoft consulting and advisory services, and training and support.

We specialize in tailoring Salesforce to meet specific business needs, integrating systems and applications using MuleSoft's robust capabilities, and providing strategic guidance for maximizing the potential of both platforms. With our expertise, businesses can achieve seamless data flow, streamline processes, enhance customer experiences, and drive digital transformation.



AUTOMATE YOUR CUSTOMER 360

Create consumer interfaces and interactions.

OmniStudio is a powerful suite of components and services that deliver industry-specific, branded experiences across multiple devices and channels. Craft dynamic customer interactions that guide users through processes quickly and easily.

[Create guided, interactive forms >](#)



Connect siloed data and automate across any system.

Composer gives you the ability to jump right in and build event-based automations across any system with clicks, not code – whether it's in service of elevating the customer experience, improving internal operations, or automating everyday manual tasks.

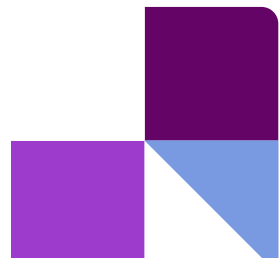
[Automate across systems >](#)



Orchestrate parallel multiuser, multistep workflows

Flow Orchestration is a product that helps you orchestrate parallel workflows involving multiple teams and systems. With built-in task guidance, everyone on the team knows exactly what they need to do and when – so they can spend less time waiting on handoffs and approvals and more time doing work that matters.

[Orchestrate across teams >](#)





FUEL YOUR CUSTOMER JOURNEY TO NEW HEIGHTS WITH OUR EXPERTS: IGNITE ENGAGEMENT, MAXIMIZE RESULTS.

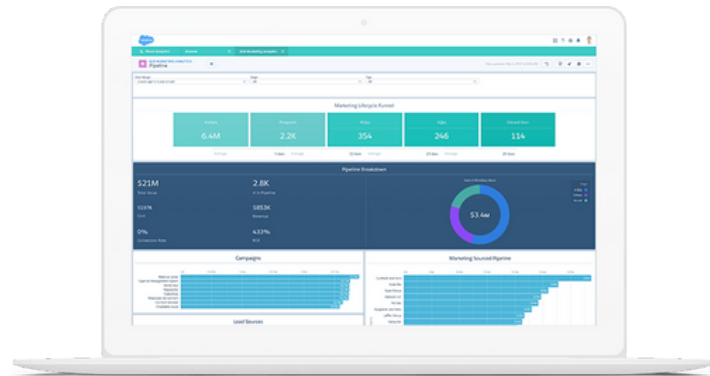
- Customer Journey Designing
- Marketing Automation with Engagement Studio
- Campaign Optimization
- Lead Scoring and Qualification
- Comprehensive Dashboards and Advanced Reporting
- Third Party apps Integration and Sync



EMPOWERING SEAMLESS CUSTOMER JOURNEYS AND AMPLIFYING MARKETING SUCCESS

We specialize in driving Customer Success with Pardot and Marketing Cloud Consulting. With our deep expertise in Pardot and Marketing Cloud, we are dedicated to empowering businesses to unlock the full potential of these powerful marketing automation platforms.

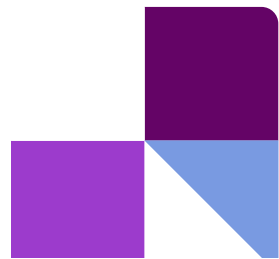
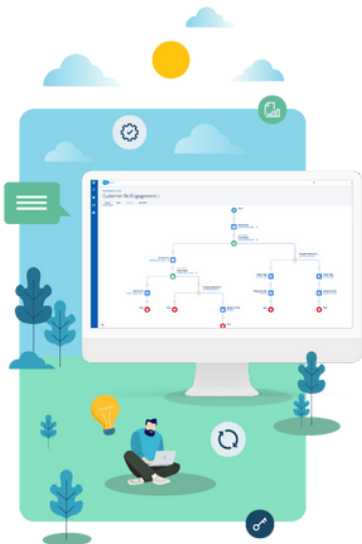
By gaining an eagle-eye view of your marketing attributions, we help you understand the true effectiveness of your marketing initiatives. From first touch to conversion and beyond, we uncover the hidden connections and insights that drive customer engagement and revenue growth. Armed with this knowledge, we collaborate with you to optimize strategies, allocate resources wisely, and amplify your ROI



UNLEASH MARKETING AUTOMATION EXCELLENCE WITH CERTIFIED PARDOT AND MARKETING CLOUD CONSULTANTS.

When you partner with our certified consultants, you can trust that you are working with a team that is up to date with the latest trends and best practices in Pardot and Marketing Cloud. They stay informed about new features, enhancements, and industry developments, ensuring that you benefit from cutting-edge techniques and strategies.

With their expertise, our consultants can guide you through the complexities of setting up, configuring, and integrating Pardot and Marketing Cloud into your existing systems. They understand the nuances of these platforms, enabling them to design tailored strategies that align with your business goals and drive exceptional results.



MANAGED SUPPORT PACKAGES

SILVER

PACKAGE

you will get

- ✓ On Demand Support & Admin Services
- ✓ Streamlined Portal Access (10 named users)
- ✓ Pay for What You Use (30 min increments)
- ✓ Mutually Defined Service Level Agreements
- ✓ Use hours for Training & Consulting
- ✓ No Expiry of unused hours

Price (AUD):

Option 1 (20 Hours) **\$4500**

Option 2 (50 Hours) **\$10000**

GOLD

PACKAGE

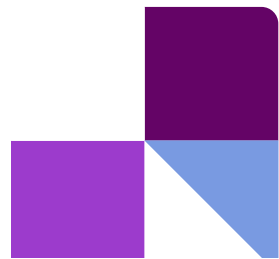
you will get

- ✓ Dedicated Technical Account Management
- ✓ Triage (review & approval) workflow capability
- ✓ Expanded Custom Portal Access (20 named users)
- ✓ Either 200 or 500 hours of Support & Admin Services
- ✓ Purchased as an Annual Agreement
- ✓ Purchase Additional Hours in 20 or 50 hour packs

Price (AUD):

Option 1 (200 Hours) **\$40000**

Option 2 (500 Hours) **\$90000**

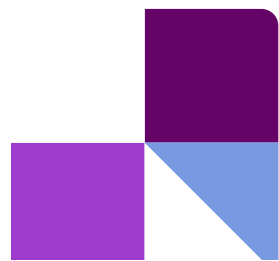




JOINING FORCES WITH INDUSTRY TITANS TO ACHIEVE DIGITAL TRANSFORMATION GOALS.



Justice and Community Safety





SEE WHAT OUR CLIENTS HAVE TO SAY ABOUT THEIR EXPERIENCE WITH US



“

Testimonial

““When we arrive at work each morning, we focus on our tasks knowing that our systems will not cause any interruptions or delays. Our consistent efforts throughout the week are well-supported by the assurance that our IT systems are fully operational and dependable. Thanks to Corptec ”



Nazeeh Aoun
Transformation Director, CyberCX



“

Testimonial

Corptec demonstrated strong knowledge of Salesforce. They collaborated with me to define system behaviour, then implementation went smoothly. Would be happy to work with them again



Ben Goodman
CTO, Unimotionsim



CORPTEC

TECHNOLOGY PARTNERS

AUSTRALIA

LVL 21, 459 COLLINS STREET
MELBOURNE, VICTORIA
3000

USA

5900 BALCONES DRIVE STE 100
AUSTIN, TEXAS,
78731

INDIA

SC0 326, SECTOR 40-D
CHANDIGARH
160040

✉ SALES@CORPTEC.COM.AU

WWW.CORPTEC.COM.AU



1800007276